

## Exporting Image Acquisition Files

1. Image files can be exported to a zip file or another folder.

**Note:** The folder can be a previously created Work Area.

2. Click the Image Studio Application button. In the menu, hover over **Export** and **Copy To**. Click **Backup Folder** or **Zip File**.
3. Either choice opens a file selection window. Choose the destination and click **Save**.

## Importing Image Acquisition Files

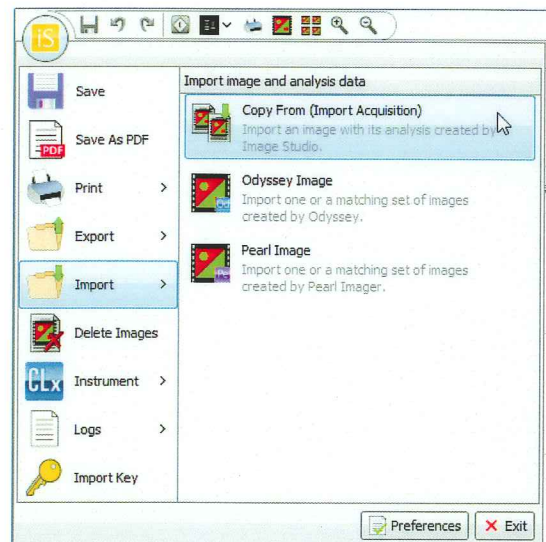
1. Image files can be imported from a zip file or another folder.

**Note:** This folder can be another Work Area.

2. Click the Image Studio Application button. In the menu, hover over **Import** and click **Copy From (Import Acquisition)**.
3. A file selection window opens. Select the zip file or image folder(s) to import and click **Open**.

**Note:** These images can be from a different Work Area.

**Note:** Click **Odyssey Image** to import images from the Odyssey® 3.0 software. Multiple image folders can be imported. Odyssey TIF files can also be imported either individually, or as two TIF files of the same image in different channels.



## Exporting an Image for Print

1. An image file can be exported as a TIFF, PNG, or JPEG file.
2. Click the Image Studio Application button. In the menu, hover over **Export** and **Single Image View** and click **Current Image**.
3. In the dialog, select the size, resolution, and file format for the image. Choose the destination and click **Save**.



4647 Superior Street | P.O. Box 4000 | Lincoln, Nebraska 68504 USA

Technical Support: 800-645-4260 | North America: 800-645-4267

International: 402-467-0700 | Fax: 402-467-0819

LI-COR GmbH Germany, Serving Europe, Africa, and the Middle East: +49 (0) 6172 17 771

LI-COR UK Ltd. Serving UK, Ireland, and Scandinavia: +44 (0) 1223 422104

All other countries, contact LI-COR Biosciences or a local distributor: [www.licor.com/distributors](http://www.licor.com/distributors)

©2011 LI-COR, Inc. All rights reserved. LI-COR and Odyssey are registered trademarks of LI-COR, Inc. in the United States and other countries.

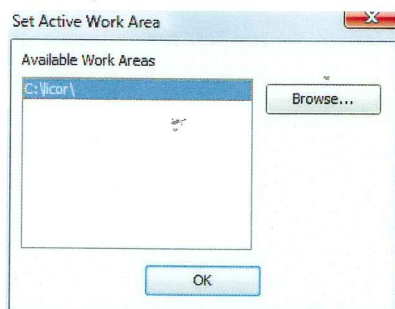
[www.licor.com/bio](http://www.licor.com/bio)

Doc# 988-12633

Rev 1011

### Open Image Studio Software

1. Double click the Image Studio icon on the desktop to start the Image Studio software.
2. Select a Work Area and click **OK**. Or, create a new Work Area. **Note:** A Work Area is a folder where the images, analyses, and settings are saved.



### To create a new Work Area...

1. Click **Browse...** to open a file selection window.
2. Select a drive and folder for the new Work Area. Create a new folder by clicking the New Folder button.
3. Name the new folder. This is the new Work Area.
4. Click **Open**. This folder will now be listed as an available Work Area. Select it and click **OK**.

### Place Blot on the Odyssey® CLx or Odyssey Classic Imager

1. Clean the Odyssey scan bed (lint-free tissues with either ultrapure water or methanol work best).
2. Place your blot protein-side down on the Odyssey scanning surface.
3. For best results: If wet, use silicone roller to eliminate bubbles under blot. If dry, place silicone mat over the blot to flatten.

### Open the Acquire Ribbon

1. In Setup choose a template to automatically set the scan controls. The template changes to **Custom** when scan controls are changed.
2. Choose an analysis to be automatically applied after image acquisition, or choose **No Analysis**.
3. For the Odyssey CLx Imager, click the **Auto** button to highlight it for wide dynamic range (*recommended*), or toggle it off for manual mode.
4. Select the channel(s) to scan (**700** and/or **800**). If using manual mode, adjust the intensity slider for each channel selected.
5. Set the Scan Controls to the default values of **169 µm**, **Lowest** (for fastest scan time), and **0.0 mm**.
6. Click the **Draw New** button. Drag a bounding box on the scan bed graphic in the location of the blot.
7. Click **Start** to begin the scan.

